



2 Years
Warranty



2-3 Day
Delivery

STERLING PRO
VANTAGE



UK Service
Support



Made In
The EU

Double Door Storage Cabinets XPI142V / XNI142V

XPI142V Fridge Specifications

Capacity (Gross/Nett)	1400 / 962 Litres
Temperature	-2°C to +8°C
Refrigerant	R600a
Model Dimensions	W1358 x D875 xH 2119mm
Packing Dimensions	W1430 x D920 x H2200mm
Energy Rating	C
Climate Class	5
Energy Efficiency Index	68.54%
Energy Consumption	829kWh per year
Supply Voltage	230/1N 50Hz
Electrical Power	192W
List Price	£3,698

XNI142V Freezer Specifications

Capacity (Gross/Nett)	1400 / 962 Litres
Temperature	-18°C to -22°C
Refrigerant	R290a
Model Dimensions	W1358 x D875 xH 2119mm
Packing Dimensions	W1430 x D920 x H2200mm
Energy Rating	D
Climate Class	5
Energy Efficiency Index	72.14%
Energy Consumption	4482 kWh per year
Supply Voltage	230/1N 50Hz
Electrical Power	840W
List Price	£4,498

Key Features

- Power supply: 13 amp plug
- Stainless Steel doors with integrated handle
- Hinged doors (left or right) with automatic return
- 24 grid level positions for increased loading capacity
- 80mm thick (CFC-free) polyurethane insulation
- Extra large touch screen controller
- Forced draft evaporator with anti-corrosion cover



**CLIMATE
CLASS 5**



Range Additional Spec XPI142V / XNI142V

Additional Features

- + Specially manufactured in high-quality Stainless Steel for intensive professional applications, featuring a very robust design and perfect finishing.
- + 80mm thickness (CFC-free), high-density (40kg/m³) polyurethane insulation, injected under high pressure.
- + Completely Stainless Steel made door with integrated handle and excellent finishing.
- + Hinged doors with automatic return for a perfect closing that minimize temperature gain. Doors have a 120° dwell position and closes automatically at less than 90°. Door hinges are also reversible allowing the cabinet to be adapted on-site.
- + Extra large touch screen controller with easily adjustable parameters, energy saving mode and HACCP alarm system.
- + Low energy consumption LED lighting to display the interior of the cabinet.
- + Intelligent air circulation system ensures perfect temperature consistency with its innovative airflow design.
- + Door switch stops the fan when door is opened to avoid cold air exiting the interior, thus saving energy.



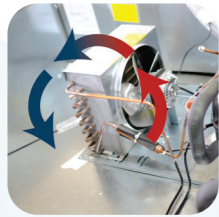
- + Automatic evaporation of defrost water. Hot gas coming from the compressor is used to automatically evaporate defrost water, instead of by means of heating elements, achieving even less energy consumption.
- + Stamped guides with rounded edges enable more convenient cleaning operations without any difficulties. Placing and adjusting the grids is also easier than ever. Plastic coated wire grids allow storage of different packaging types and have a maximum loading capacity of up to 40kg.
- + Removable pull-out/push-in magnetic door gasket to keep maximum hygiene and maintain the insulating properties.
- + Rounded edge interiors, easier cleaning operations to reduce potential dirt traps.



Premium Range Cabinet Features



Premium Range Cabinet Features



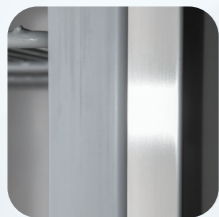
High efficiency components

Low energy compressors, large area evaporators and high performing electronic fans that minimize temperature gains, reducing energy consumption.



Integrated Stainless Steel handle

Ergonomic, Stainless Steel made, robust, perfectly integrated handle ensures practical opening of the door that avoids dust and dirt collection being extremely easy to clean.



Insulation - 80mm thickness

80mm thickness CFC-free, high-density (40kg/m³) polyurethane insulation, guarantees exceptional, long-term insulation and energy savings in all Vantage cabinets.



Intelligent air circulation system

Perfect temperature consistency with its innovative airflow design that encircles the food and ensures its proper conservation.



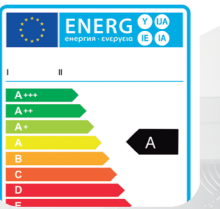
Rounded edge interior

Easier cleaning operations to reduce potential dirt traps and optimum hygiene.



Removable door gasket

Removable pull-out/push-in magnetic door gasket to keep maximum hygiene and maintain the insulating properties.



Maximum energy savings

The low energy consumption has allowed to reach the A under the conditions defined in climate class 5, ensuring the maximum energy savings.

*The label complies with the delegated regulation (UE) 2015/1094 of the commission of 5th May 2015



Compact controller

Extra large, screen touch controller with energy saving strategy and HACCP alarm system, which allows an easy temperature parameter adjustment ensuring the best food preservation. It also offers a Bluetooth data logger as an option.



Automatic evaporation of defrost water

Hot gas coming from the compressor is used to automatically evaporate defrost water, instead of by means of heating elements, achieving even less energy consumption.



Stamped guides, sturdy wire grids

Stamped guides with rounded edges enable more convenient cleaning operations without any difficulties. Plastic coated wire grids allow storage of different packaging types and have a maximum loading capacity of up to 40kg.



Internal LED lighting

Low energy consumption LED lighting to display the interior, standard in all Vantage upright models.



Self closing hinged doors

Hinged doors with automatic return for a perfect closing that minimize temperature gain and reduces energy consumption. Doors have a 120° dwell position and closes automatically at less than 90°. Door hinges are also reversible.