



Series 650 - a range of cooking equipment for the professional kitchen. The series is defined by optimum energy use, powerful appliances, and ease of cleaning. The modular design means that the appliances are easy to combine and can be arranged flexibly. The appliance structure consists entirely of 18/10 stainless steel.

- Height-adjustable feet: Yes
- Sub-counter unit type: Open
- Material: CNS 18/10
- Important information: -
- Height adjustable: 560 mm to 660 mm
- Series: 650
- Size: W 1,000 x D 535 x H 560 mm
- Weight: 17.2 kg

Device linking strip 650

- Important information: -
- Size: W 20 x D 575 x H 8 mm
- Weight: 0.17 kg

Code-No. 110036
GTIN 4015613215785

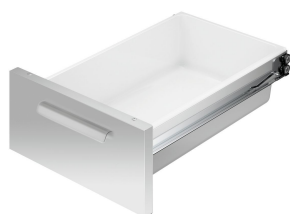
Door 650, W400, universal



- Material: Chrome-nickel steel
- Important information: -
- Size: W 395 x D 395 x H 45 mm
- Weight: 2.5 kg

Code-No. 112025
GTIN 4015613559995

Drawer 650, W400, set of 2



- Size plastic tray: W 325 x D 530 x H 150 mm
- Number of drawers: 2
- Set comprises: 2 drawers
- With plastic inserts: Yes
- Norm-format drawers: 1/1 GN
- GN-capable: Yes
- Properties: -
- Material: CNS 18/10
- Important information: -
- Size inside: W 297 x D 502 x H 148 mm
- Series: 650

Code-No. 112035
GTIN 4015613688466

Door 650, W600, universal



- Material: Chrome-nickel steel
- Important information: -
- Size: W 595 x D 395 x H 45 mm
- Weight: 3.5 kg

Code-No. 112026
GTIN 4015613560007

Stainl.steel polish.spray 500ml can



- Content / can: 500 ml
- Order quantity unit: 1 box (12 cans)
- Application: Remove heavy soiling such as grease residue first
Do not spray onto hot surfaces
- allow them to cool down first:
- Application: Before use, bring the can to room temperature and shake well
Spray sparingly onto the surfaces to be cleaned
Rub evenly over the entire surface
Polish with a dry cloth

Code-No. 173031
GTIN 4015613360195

Shelf 650, W400



- Material: Chrome-nickel steel
- Important information: -
- Size: W 360 x D 525 x H 30 mm
- Weight: 1.55 kg

Code-No. 112030
GTIN 4015613432939

Shelf 650, W600



- Material: Chrome-nickel steel
- Important information: -
- Size: W 525 x D 660 x H 30 mm
- Weight: 2.3 kg

Code-No. 112031
GTIN 4015613432946