

Buffet trolley, cold, 4x 1/1 GN

Bartscher



▶ Designed for:

- ✓ 4 x GN 1/1
- ✓ Max. depth of GN containers: 150 mm

▶ Prepared for attachment of matching tray chute on both sides



Cold food perfectly presented.
The buffet cart is optimally equipped with integrated lighting, sneeze guard with shelf function and wheels for convenient transport.

- Cooling: Static
- Coolant: R290 / 0,060 kg
- Power load: 0,507 kW | 230 V | 50 Hz
- Number of tanks: 1
- Temperature range: 2 °C to 10 °C
- Basin size, GN format: 4 x 1/1 GN
- Control lamp: ON/OFF
- Drain cock: No
- Germ guard: Yes
- Lighting: On the germ guard
- Delivery state: Building kit (simple assembly)
- Swivel casters: 4 swivel casters, 2 with brake
- Properties: Work surface made of Granit Rosa Porrino
Stainless steel sink
- Colour: Teak
- Not included in delivery: GN containers
- Depth GN container max.: 150 mm
- Material: Wood
- Important information: -
- Estimated delivery time from our warehouse in Salzkotten, Germany is week: 05 / 2022
- Size: W 1,490 x D 880 x H 1,370 mm
- Weight: 152 kg

GB

01/2022

1/4



Subject to technical modifications and errors.

Code-No. 125526

GTIN 4015613784519

Buffet trolley, cold, 4x 1/1 GN

Add on Products

GN-container, 1/1GN,D150, Basic Line

CNS



- Content: 21 litre(s)
- Stackable: Yes
- Design: No perforation
- Reinforced edge: No
- Surface: Silk matt
- Depth container: 150 mm
- Gastronorm: 1/1 GN
- Norm: EN 631
- Series: Basic Line
- Material: Chrome-nickel steel
- Important information: -

Code-No. 711150
GTIN 4015613695600

GN-container, 1/2GN,D150, Basic Line

CNS



- Content: 9,5 litre(s)
- Stackable: Yes
- Design: No perforation
- Reinforced edge: No
- Surface: Silk matt
- Depth container: 150 mm
- Gastronorm: 1/2 GN
- Norm: EN 631
- Series: Basic Line
- Material: Chrome-nickel steel
- Important information: -

Code-No. 712150
GTIN 4015613695723

GN-container, 1/3GN,D150, Basic Line

CNS



- Content: 5,75 litre(s)
- Stackable: Yes
- Design: No perforation
- Reinforced edge: No
- Surface: Silk matt
- Depth container: 150 mm
- Gastronorm: 1/3 GN
- Norm: EN 631
- Series: Basic Line
- Material: Chrome-nickel steel
- Size: W 325 x D 176 x H 150 mm

Code-No. 713150
GTIN 4015613695792

GN container, 1/1, D150

CNS
18/10



- Content: 21 litre(s)
- Stackable: Yes
- Design: No perforation
- Reinforced edge: No
- Properties: -
- Surface: High-gloss
- Depth container: 150 mm
- Gastronorm: 1/1 GN
- Norm: EN 631
- Series: Top Line
- Important information: -

Code-No. A120610
GTIN 4016098101204

GN container, 1/2, 150mm, 9,5 L

CNS
18/10



- Content: 9,5 litre(s)
- Stackable: Yes
- Design: No perforation
- Reinforced edge: No
- Properties: -
- Surface: High-gloss
- Depth container: 150 mm
- Gastronorm: 1/2 GN
- Norm: EN 631
- Series: Top Line
- Important information: -

Code-No. A120620
GTIN 4015613278988

GN container, 2/4, D150

CNS
18/10



- Content: 9 litre(s)
- Stackable: Yes
- Design: No perforation
- Reinforced edge: No
- Properties: -
- Surface: High-gloss
- Depth container: 150 mm
- Gastronorm: 2/4 GN
- Norm: EN 631
- Series: Top Line
- Important information: -

Code-No. A128150
GTIN 4015613271156

GN container, 1/3, D150

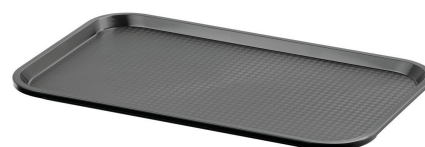
CNS
18/10



- Content: 5,75 litre(s)
- Stackable: Yes
- Design: No perforation
- Reinforced edge: No
- Properties: -
- Surface: High-gloss
- Depth container: 150 mm
- Gastronorm: 1/3 GN
- Norm: EN 631
- Series: Top Line
- Important information: -

Code-No. A123150
GTIN 4016098101266

Tray GN110-S



- Colour: Black
- Important information: -
- Dishwasher safe: Yes
- Stackable: Yes
- Dimensions surface: W 495 x D 290 mm
- Worktop surface: Structured
- Norm format: 1/1 GN
- Material: Plastic (polypropylene)
- Properties: -
- Size: W 530 x D 325 x H 20 mm
- Weight: 0.58 kg

Code-No. 701053
GTIN 4015613695303

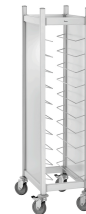
Tray KN45350-HG



- Colour: Light grey
- Worktop surface: Structured
- Stackable: Yes
- Dishwasher safe: Yes
- Properties: -
- Material: Plastic (polypropylene)
- Important information: -
- Norm format: Canteen norm
- Dimensions surface: W 415 x D 315 mm
- Size: W 450 x D 355 x H 20 mm
- Weight: 0.39 kg

Code-No. 701054
GTIN 4015613695310

Tray trolley AT1000-GN



- Can be loaded from both sides: Yes
- Designed for: Fast-Food trays
Serving trays
- Worktop surface: No
- Properties: -
- Including: -
- Model: Tray holders
- Application area: Clearing
- Total load-bearing capacity, max.: 60 kg
- With handle(s): No
- Swivel casters: 4 swivel casters, 2 with brake

Code-No. 300149
GTIN 4015613709185