

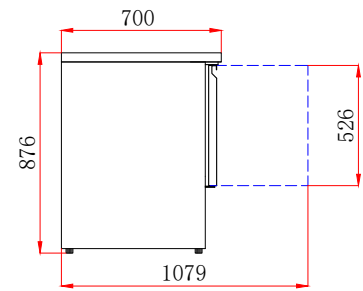
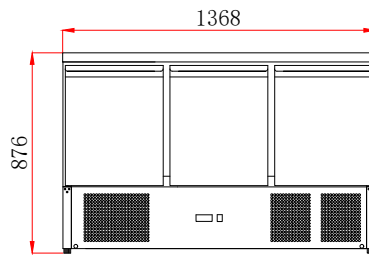
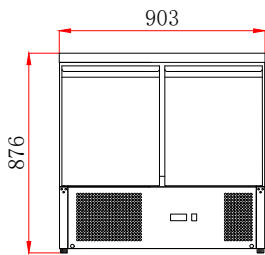
Compact Gastronorm Counters

700mm Depth

KXCC2



KXCC3



FEATURES

- 201 stainless steel exterior & interior
- Internal corners rounded to aid cleaning
- 1 x adjustable GN1/1 shelf per door
- Replaceable door gasket
- 45mm insulation
- 4 feet
- Easily removable condenser filter for cleaning

TECHNICAL SPECIFICATIONS

- Controller: Dixell controller
- Cooling: Fan assisted
- Defrost: Automatic
- Refrigerant: R600a (KXCC2)
R290 (KXCC3)
- Climate Class: 4
- Temperature Range: +2°C ~ +8°C
- Power Supply: 13amp

MODEL	DOOR	GROSS CAPACITY	EXT. DIMENSIONS (H x W x D mm)	ENERGY RATING	POWER CONSUMPTION	KWH /ANNUM	DECIBELS	WEIGHT (kg)	RRP
KXCC2	2	240L	876 x 903 x 700	C	170W	830	42dBA	86	
KXCC3	3	368L	876 x 1368 x 700	D	240W	1294	42dBA	126	



See page 336 for full GN container range

