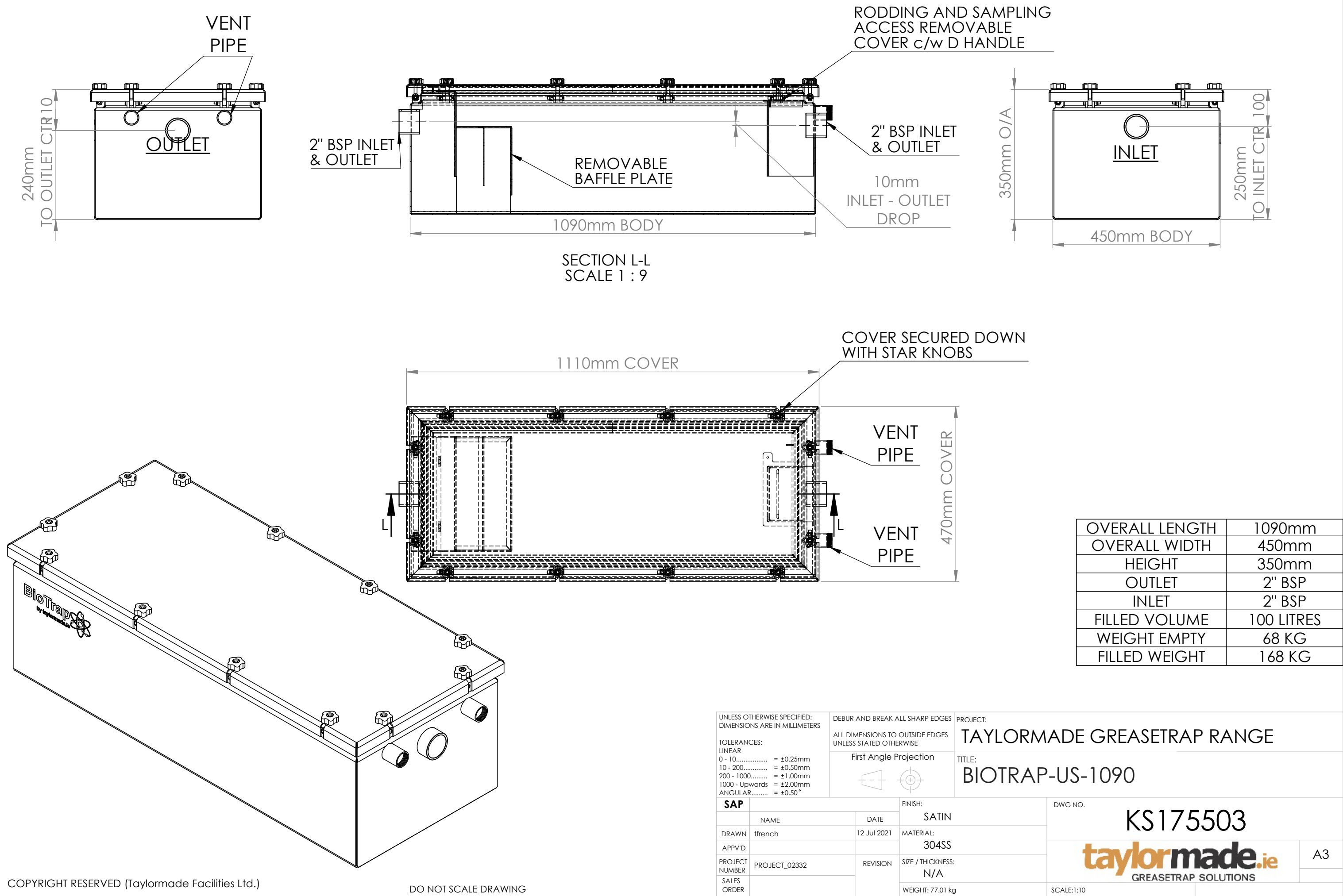
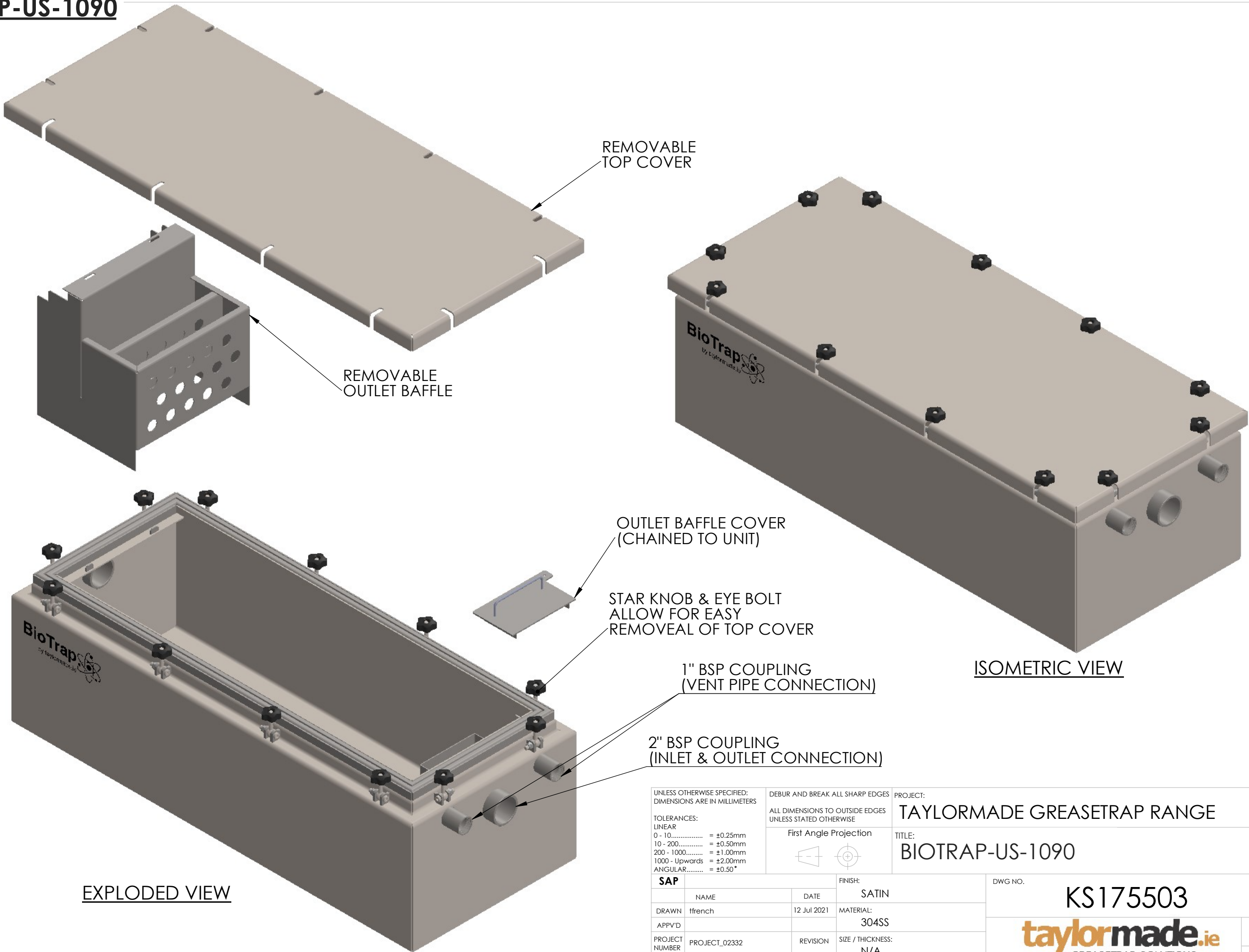


BIOTRAP-US-1090

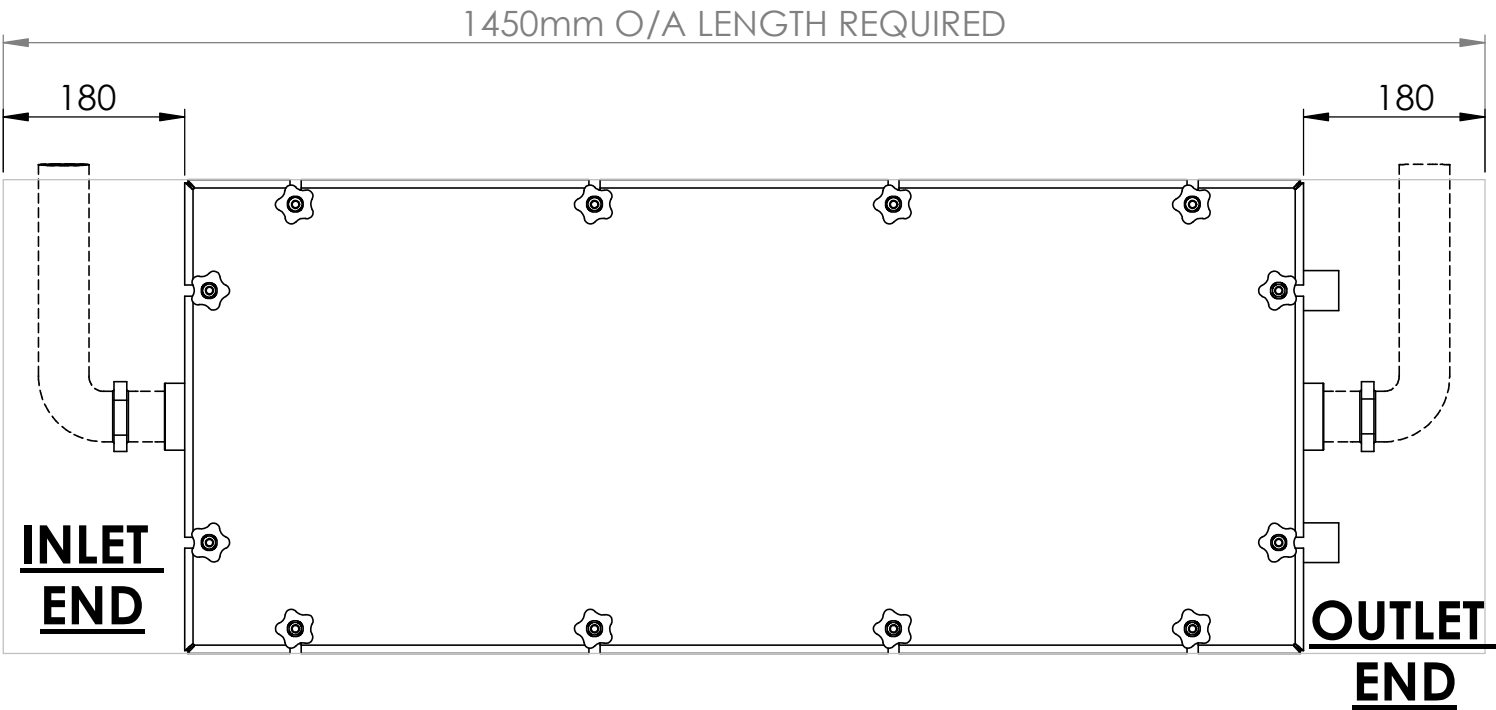


BIOTRAP-US-1090



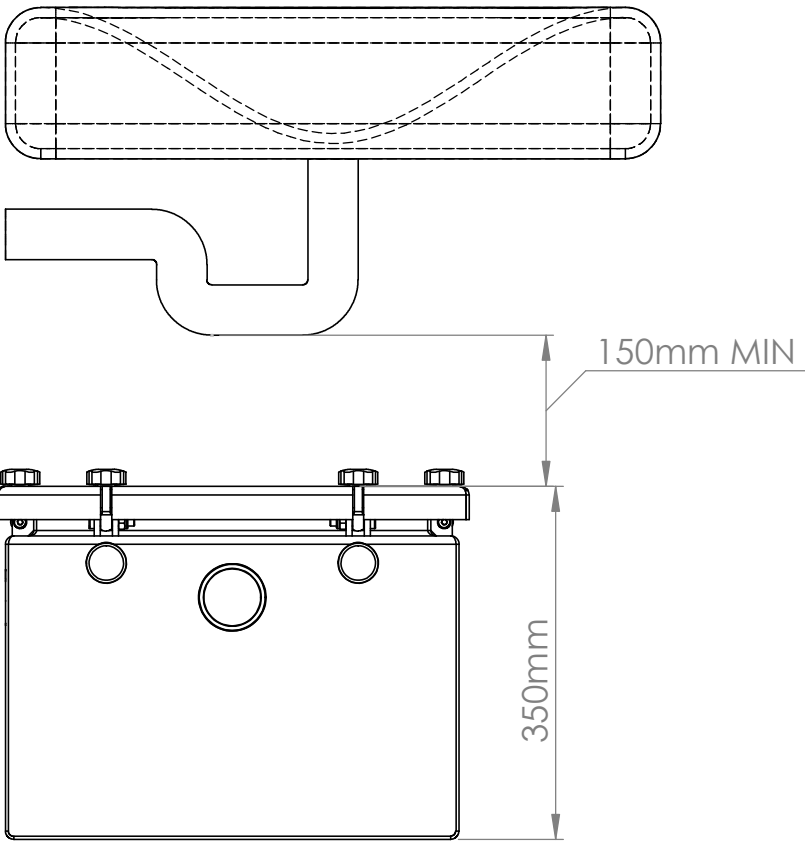
UNLESS OTHERWISE SPECIFIED: DIMENSIONS ARE IN MILLIMETERS		DEBUR AND BREAK ALL SHARP EDGES	PROJECT: TAYLORMADE GREASETRAP RANGE	
TOLERANCES: LINEAR 0 - 10..... = ±0.25mm 10 - 200..... = ±0.50mm 200 - 1000..... = ±1.00mm 1000 - Upwards = ±2.00mm ANGULAR..... = ±0.50°		ALL DIMENSIONS TO OUTSIDE EDGES UNLESS STATED OTHERWISE	TITLE: BIOTRAP-US-1090	
First Angle Projection				
SAP	NAME	DATE	FINISH: SATIN	DWG NO. KS175503
DRAWN	tfrench	12 Jul 2021	MATERIAL: 304SS	taylor made .ie GREASETRAP SOLUTIONS
APPV'D			SIZE / THICKNESS: N/A	
PROJECT NUMBER	PROJECT_02332	REVISION	WEIGHT: 77.01 kg	A3
SALES ORDER				SCALE:1:10

REQUIRED FOOTPRINT FOR THIS MODEL




180mm REQUIRED AT BOTH
ENDS OF GREASETRAP FOR
PIPEWORK AS SHOWN

REQUIRED HEADROOM FOR THIS MODEL



150mm REQUIRED AT TOP OF
GREASETRAP TO ALLOW FOR LID
REMOVAL & CLEANING AS SHOWN

UNLESS OTHERWISE SPECIFIED: DIMENSIONS ARE IN MILLIMETERS		DEBUR AND BREAK ALL SHARP EDGES		PROJECT: TAYLORMADE GREASETRAP RANGE	
TOLERANCES: LINEAR 0 - 10..... = ±0.25mm 10 - 200..... = ±0.50mm 200 - 1000..... = ±1.00mm 1000 - Upwards = ±2.00mm ANGULAR..... = ±0.50°		ALL DIMENSIONS TO OUTSIDE EDGES UNLESS STATED OTHERWISE		TITLE: BIOTRAP-US-1090	
		First Angle Projection			
					
SAP		FINISH:		DWG NO.	
NAME		DATE		KS175503	
DRAWN tfrench		12 Jul 2021		MATERIAL: 304SS	
APPV'D				SIZE / THICKNESS: N/A	
PROJECT NUMBER PROJECT_02332		REVISION		WEIGHT: 77.01 kg	
SALES ORDER				SCALE:1:10	
				A3	
				taylor made .ie GREASETRAP SOLUTIONS	