



DOMINA PRO 700 - BASES

NSA77

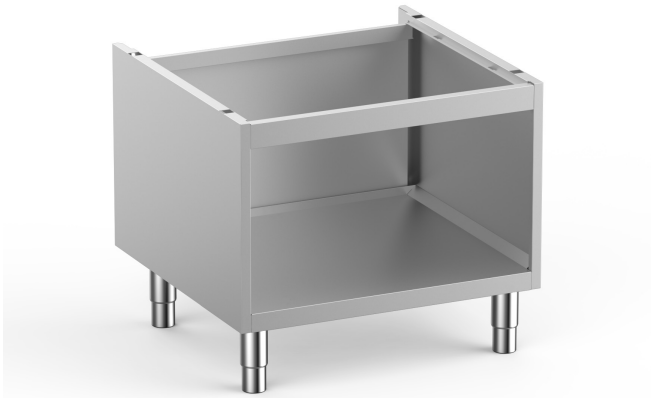
OPEN STAND

TECHNICAL DATA:

External dimensions - WxDxH (cm)	70x59,5x60
----------------------------------	------------

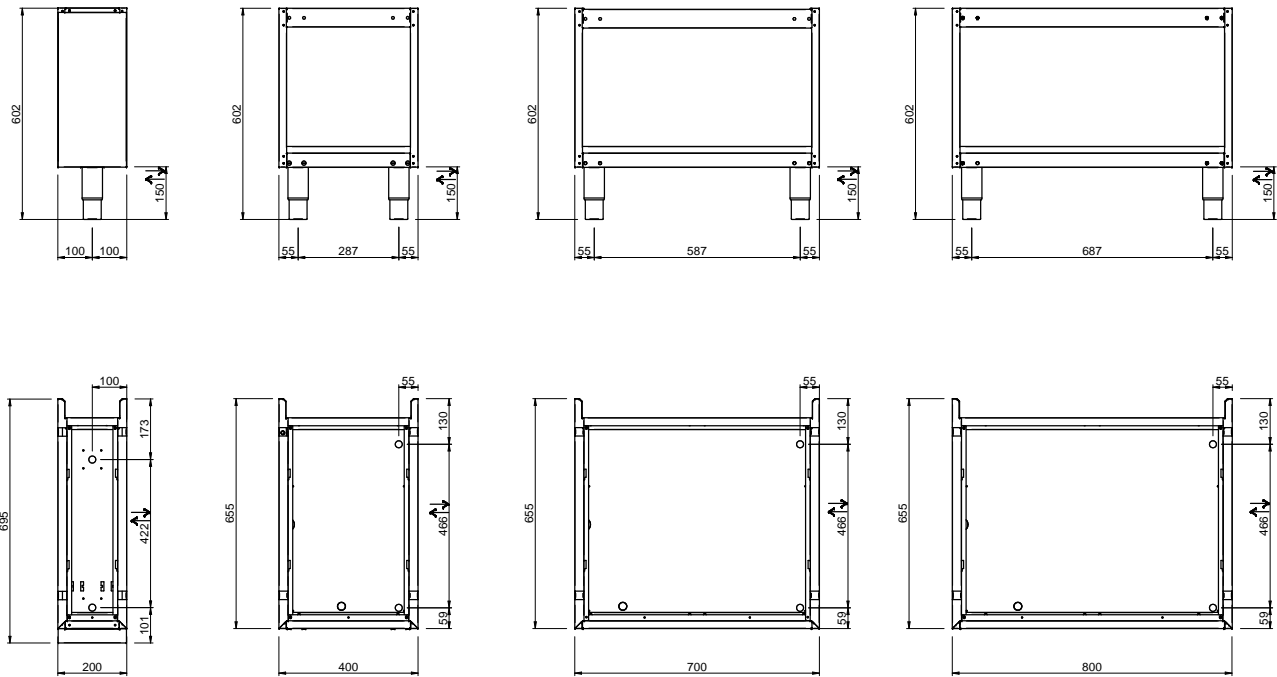
ADDITIONAL TECHNICAL DATA:

Weight (kg)	22
Volume (m3)	0,3



The DOMINA PRO 700 cupboard bases consists of different models dimensions.

The DOMINA PRO 700 range of ventilated refrigerated bases consists of models with 2/3 drawers or 2/3 doors. They are designed to carry cooking top units.



LEGENDA SIMBOLI / LEGEND



INGRESSO GAS / GAS INLET
(EN 10226-1) Ø M 1/2"



ALIMENTAZIONE ELETTRICA /
POWER SUPPLY



INGRESSO ACQUA /
WATER INLET Ø M 1/2"



SCARICO ACQUA / OLII
WATER / OILS DRAIN



ATTACCO EQUIPOTENZIALE /
EQUIPOTENTIAL



REGOLAZIONE PIEDINI /
FEET ADJUSTMENT (h 0/+50)
/ TOP VERSION (h 0/+5)