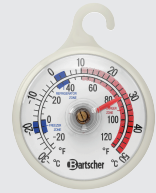




► Temperature range:

- ✓ -30 °C to 50 °C
- ✓ -20 °F to 120 °F



► With suspension device



Simple but effective: Analogue temperature control from deep-freeze to room temperature.

- Application area:
  - Canteens
  - Refrigeration cell
  - Freezer cell
  - Refrigerated rooms
- Temperature range: -30 °C to 50 °C
- Designed for:
  - Room temperature measurements
  - Refrigerators / upright freezers
  - Temperature monitoring during transport and storage
- Properties:
  - Temperature range also in Fahrenheit
  - With suspension device
- Including: -
- Colour: White
- Temperature measurement units:
  - °C
  - °F
- Material: Plastic
- Important information: -
- Size of display field: Ø 45 mm
- Design: Analogue
- With temperature sensor: No
- Battery: -
- Size: W 51 x D 13 x H 66 mm
- Weight: 0.01 kg