

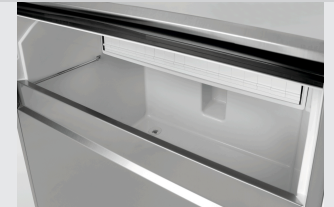


- ▶ Ice-cube design: Conical (full cone)
- ✓ Ice-cube size: 35 x 32 mm, 20 g



- ▶ Max. production: 70 kg / 24 hrs
- ▶ Production/cycle: 56 ice-cubes

- ▶ Storage tank capacity: 42 kg / 2100 ice-cubes



- ▶ Can be fitted below the counter



More efficient and economical – the optimised ice-cube maker series B Plus supplies fully conical ice-cubes in high production quantities and is also very economical.

- |  |   |
|--|---|
| <ul style="list-style-type: none"> <li>• Height-adjustable feet: No</li> <li>• Height without feet: 910 mm</li> <li>• Water outlet: Ø 20 mm</li> <li>• Design ice cube: Tapered form (full taper)</li> <li>• Ice cube size: 35 x 32 mm, 20 g</li> <li>• Production / work step: 56 Ice cubes</li> <li>• Number of ice cube sizes: 1</li> <li>• Power load: 0,88 kW   230 V   50 Hz</li> <li>• Properties: Cleaning function<br/>Water consumption / hour: 10.3 litres</li> <li>• Control lamp: ON/OFF</li> <li>• ON/OFF switch: Yes</li> <li>• Control unit: Electronic</li> <li>• Can be fitted below the counter: Yes</li> <li>• Can be installed: No</li> <li>• Water connection: 3/4"</li> <li>• Climate class: T</li> <li>• Coolant: R290 / 0,100 kg</li> <li>• Cooling: Air cooled</li> <li>• Filling level sensor: Yes</li> <li>• Storage container capacity: 42 kg</li> <li>• Production max.: 70 kg / 24 h</li> <li>• Production by means of: Spray system</li> <li>• Colour: Silver</li> <li>• Including: 1 ice shovel</li> <li>• Material: Stainless steel<br/>Plastic</li> </ul> | <ul style="list-style-type: none"> <li>• Material: Steel<br/>Galvanised</li> <li>• Important information: Clearance to all sides at least 15 cm</li> <li>• Estimated delivery time from our warehouse in Salzkotten, Germany is week: 05 / 2022</li> <li>• Size: W 705 x D 580 x H 910 mm</li> <li>• Weight: 53.6 kg</li> </ul> |
|--|---|

## ice cube maker B 70 Plus

Add on Products

### Stainl.steel polish.spray 500ml can



- Content / can: 500 ml
- Application: Remove heavy soiling such as grease residue first  
Do not spray onto hot surfaces
- allow them to cool down first:
- Application: Before use, bring the can to room temperature and shake well  
Spray sparingly onto the surfaces to be cleaned  
  
Rub evenly over the entire surface  
Polish with a dry cloth

Code-No. 173031  
GTIN 4015613360195

### Ice Crusher, stainless steel



- Colour: Silver
- Power load: 0,06 kW | 230 V | 50 Hz
- Production max.: 60 kg / h
- Material: Stainless steel
- Important information: -
- ON/OFF switch: No
- Safety switch: 2
- Storage capacity collection tray: 1 kg
- Model: With collection tray
- Properties ice tray: With lid
- Properties: Collection tray can be removed

Code-No. 135012  
GTIN 4015613479118

### Partial desalination system TKD 13400 FB



- Desalination type: Partial desalination
- Sampling tap: Yes
- Water connection: 3/4"
- Colour: Blue
- Connection capacity: 1 unit
- Output capacity: 13,400 litres / cartridge at 10° d (carbonate hardness)
- Material: Plastic  
Glass-fibre reinforced
- Important information: -
- Deposit per cartridge: 290 €

Code-No. 109878  
GTIN 4015613681597