



- ▶ For bulky items
  - ✓ Tray size max.: 655 x 805 mm
  - ✓ Dishwasher item height max.: 805 mm



- ▶ Output / hour max.: 30 baskets



- ▶ Run-time 120 / 240 / 360 / 480 / 600 seconds



- ▶ Double-walled



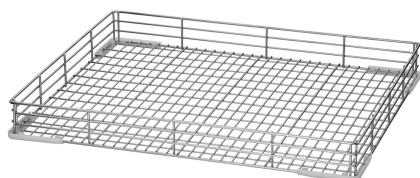
- ▶ We recommend a warm water connection up to 55 °C

Whether trays, baking sheets, chopping boards, GN containers, pots or pans - The TS5500 is designed for cleaning bulky items with the included tray basket and rinsing grille. Features such as the electronic thermo-stop, the Plus-System and the vertical pump strainer ensure the best washing results.

<ul style="list-style-type: none"> <li>✓ Material: Stainless steel</li> <li>• Important information: -</li> <li>• Height when door is open: 2275 - 2325 mm</li> <li>• Tray size max.: 655 x 805 mm</li> <li>• Door double-walled: Yes</li> <li>• Can be fitted below the counter: No</li> <li>• Power load: 8,18 kW   400 V   50 Hz</li> <li>• Equipment connection: 3 NAC</li> <li>• Height adjustable: 1890 mm to 1940 mm</li> <li>• Boiler heater: 6 kW</li> <li>• Tank heater: 3 kW</li> <li>• Dry-run protection: Yes</li> <li>• Control lamp: Heat up Operational In operation</li> <li>• ON/OFF switch: Yes</li> <li>• Lye pump: No</li> <li>• Water softener: No</li> <li>• Clear rinsing dosing pump: Yes</li> <li>• Door contact switch: Yes</li> <li>• Safety thermostat: Yes</li> <li>• Cleaning agent dosing pump: Yes</li> <li>• Run-time: 120 / 240 / 360 / 480 / 600 seconds</li> <li>• Output / hour max.: 30 baskets</li> <li>• Self-cleaning: Yes</li> <li>• Cold rinsing: No</li> <li>• Double-walled: Yes</li> </ul>	<ul style="list-style-type: none"> <li>• Tank volume: 50 litre(s)</li> <li>• Water pressure: 2 - 4 bar</li> <li>• Water supply: G 3/4"</li> <li>• Water outlet: Ø 32 mm</li> <li>• Including: 1 universal basket 1 tray basket 1 cutlery holder 1 rinsing grille</li> <li>• Tray size max.: 805 mm</li> <li>• Basket dimensions: 665 x 550 mm</li> <li>• Number of wash programs: 5</li> <li>• Properties: Electronic thermo-stop Plus-System (pressure boost pump, break tank, pressure-free boiler) 2 rinsing arms, each with 1 rinsing pump Twin strainer (waste collector and pump strainer removable) Washing tub deep-drawn, with levels Easy removal of the filter Vertical, self-cleaning pump strainer Self-diagnosis system Stand-by function Multicoloured start button Multi-lingual control menu</li> <li>• Water intake temperature: 55 °C</li> <li>• Display: Text display</li> </ul>
---	--

### Universal basket TS5500

CNS 18/10

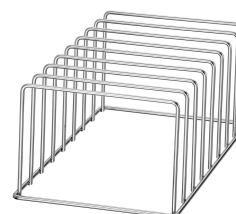


- Inside height: 70 mm
- Stackable: No
- Number of shelves: 1
- Colour: Silver
- Design: Flat
- Material: CNS 18/10
- Important information: -
- Suitable for: Pots  
Pans  
GN containers
- Basket size: 665 x 550 mm

Code-No. 110690  
GTIN 4015613737669

### Tray basket TS

CNS 18/10

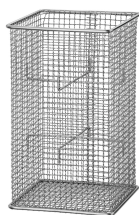


- Inside height: 195 mm
- Number of shelves: 8
- Design: Tray holders
- Tray size max.: 600 x 400 mm
- Material: CNS 18/10
- Important information: -
- Basket size: 300 x 465 mm
- Suitable for: Trays  
Baking trays  
Chopping boards
- Size: W 300 x D 472 x H 200 mm

Code-No. 110691  
GTIN 4015613737676

### Cutlery holder TS

CNS 18/10

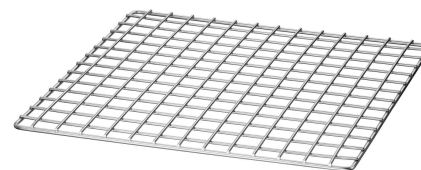


- Colour: Silver
- Material: CNS 18/10
- Important information: -
- Size: W 150 x D 150 x H 255 mm
- Weight: 0.55 kg

Code-No. 110692  
GTIN 4015613737683

### Rinse grid TS5500

CNS 18/10



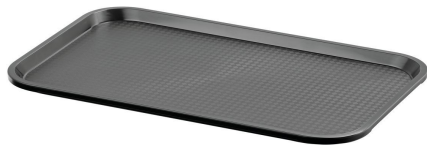
- Material: CNS 18/10
- Important information: -
- Designed for: Rinsing of specially large containers (pots, bowls, butcher box)
- Size: W 660 x D 550 x H 15 mm
- Weight: 2.7 kg

Code-No. 110693  
GTIN 4015613737690

# Pot dishwasher TS5500

## Add on Products

### Tray GN110-S



- Colour: Black
- Important information: -
- Dishwasher safe: Yes
- Stackable: Yes
- Dimensions surface: W 495 x D 290 mm
- Worktop surface: Structured
- Norm format: 1/1 GN
- Material: Plastic (polypropylene)
- Properties: -
- Size: W 530 x D 325 x H 20 mm
- Weight: 0.59 kg

Code-No. 701053  
GTIN 4015613695303

### Tray KN45350-HG



- Colour: Light grey
- Worktop surface: Structured
- Stackable: Yes
- Dishwasher safe: Yes
- Properties: -
- Material: Plastic (polypropylene)
- Important information: -
- Norm format: Canteen norm
- Dimensions surface: W 415 x D 315 mm
- Size: W 450 x D 355 x H 20 mm
- Weight: 0.39 kg

Code-No. 701054  
GTIN 4015613695310

### Tray trolley TT1600



- Can be loaded from both sides: Yes
- Worktop surface: Yes, with railing
- Delivery state: Building kit (simple assembly)
- Swivel casters: 4 swivel casters, 2 with brake
- Diameter casters: 125 mm
- With handle(s): Yes
- Material: Chrome-nickel steel
- Important information: -
- Properties: -
- Including: -
- Total load-bearing capacity, max.: 48 kg

Code-No. 300083  
GTIN 4015613587615

### Full desalination system VK 500 FB



- Desalination type: Full desalination
- Water connection: 3/4"
- Colour: Blue
- Connection capacity: 1 unit
- Output capacity: 5,000 litres / cartridge at 10° d (total salt content)
- Material: Plastic  
Glass-fibre reinforced
- Important information: -
- Deposit per cartridge: 290 €
- Sampling tap: Yes

Code-No. 109877  
GTIN 4015613681580

# Pot dishwasher TS5500

## Add on Products

### Stainl.steel polish.spray 500ml can



- Content / can: 500 ml
- Application: Remove heavy soiling such as grease residue first  
Do not spray onto hot surfaces
- allow them to cool down first:
- Application: Before use, bring the can to room temperature and shake well  
Spray sparingly onto the surfaces to be cleaned  
  
Rub evenly over the entire surface  
Polish with a dry cloth

Code-No. 173031  
GTIN 4015613360195

### Rinsing agent F10kg



- Designed for: Commercial dishwashers  
Household dishwashers  
Combined steamer
- Model: Liquid
- Ph level: 2,1
- HACCP compliant: Yes
- Chlorine-free: Yes
- Phosphate-free: Yes
- Important information: Keep out of the reach of children!  
Exclusively available in Germany and Austria  
Safety data sheet available on request

Code-No. 173072  
GTIN 4015613731865

### Rinsing agent F10L



- Model: Liquid
- HACCP compliant: Yes
- Chlorine-free: Yes
- Phosphate-free: Yes
- Including: -
- Content: 10 litres
- Designed for: Commercial dishwashers  
Household dishwashers  
Combi steamer with rinsing program
- Application: Application concentrations: 0.2 - 0.4 g per litre of rinsing water depending on water hardness

Code-No. 173272  
GTIN 4015613767901

### Water softener WEH1600 #1



- Power load: 0,006 kW | 230 V | 50/60 Hz
- Digital display: Yes
- Water intake temperature from: 5 °C
- Water intake temperature to: 35 °C
- Regeneration: Time period
- Water connection: 3/4"
- Colour: White
- Output capacity: 1,600 litres / day at 10° d (total hardness)
- Material: Plastic
- Important information: -
- Connection capacity: 1 unit

Code-No. 109952  
GTIN 4015613797762